

**Company Presentation**

**SUNECON**

**SURINAME ENGINEERING CONSULTANTS**



**Always going the Extra  
Mile for our Clients**



**May, 2021**

## WHO ARE WE?

- We are a leading independent Surinamese engineering consultancy firm offering advice and engineering solutions for any infrastructure and building project. We are respected and trusted for our expertise in civil and structural engineering, and general project management.
- We were founded in July 1967 as a sole proprietorship; and transformed to a partnership in 2008 (currently 4 managing partners)
- First local engineering firm in Suriname
- 50+ employees (1990: 20 employees)
- As part of our services we operate a fully functional survey department and soils & asphalt testing laboratory
- Co-founder of ORIS (Association of Engineering Companies in Suriname) and BKS (cooperating associations Building and Construction Sector in Suriname);
- ISO 9001:2015 certified



SUNECON - SURINAME ENGINEERING CONSULTANTS

VAN ROOSMALENSTRAAT 30 - POSTBUS: 770 - PARAMARIBO - SURINAME - T: (+597) 472275/477805 - F: (+597) 474408 - EMAIL: SUNECON@SR.NET

## OUR VISION

We aspire to be the most respected civil engineering consulting firm in Suriname and the region.

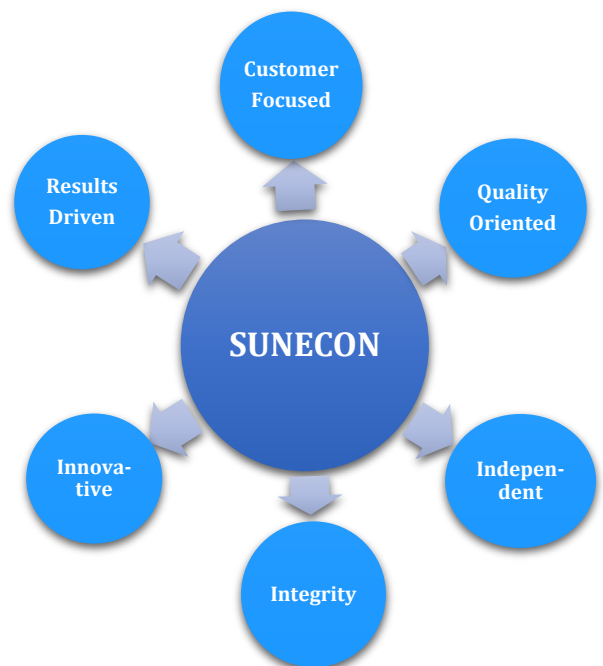


## OUR MISSION

- To advise and provide services related to all aspects of civil engineering, structural engineering and project management;
- To advise our Clients and provide our services on a professional level within a framework of high integrity, social responsibility and up to date technical knowledge;
- Recognizing our employees to be our most valuable asset, SUNECON pursues to create an environment of continuous upgrading and training of its personnel.

## OUR CORE VALUES

- **We are focused on the customer:** We continually take care to understand our clients' needs and strive to deliver beyond their expectations.
- **We act with integrity, always:** We're honest, transparent and committed to doing what's best for our customers, our company, and society in general.
- **Result driven:** We are passionate in delivering sound, practical and timely solutions and services to our customers.
- **Quality oriented:** We take pride in a high level of professionalism and up to date technical knowledge.
- **Innovative:** We constantly seek to improve and innovate. We invest in our personnel, learn from others and from our experiences.
- **Independent:** We believe in accountability and communicate openly. We take ownership for the quality of our individual and team work.



SUNECON - SURINAME ENGINEERING CONSULTANTS

VAN ROOSMALENSTRAAT 30 - POSTBUS: 770 - PARAMARIBO - SURINAME - T: (+597) 472275/477805 - F: (+597) 474408 - EMAIL: SUNECON@SR.NET

## MANAGING PARTNERS



**Marcel Meyer**

General Manager

---



**Ronny Blufpand**

Financial Manager & Project Manager

---



**Jerry Koornaar**

Technical Manager & Project Manager

---



**Yves Blufpand**

Design Manager & Project Manager

---



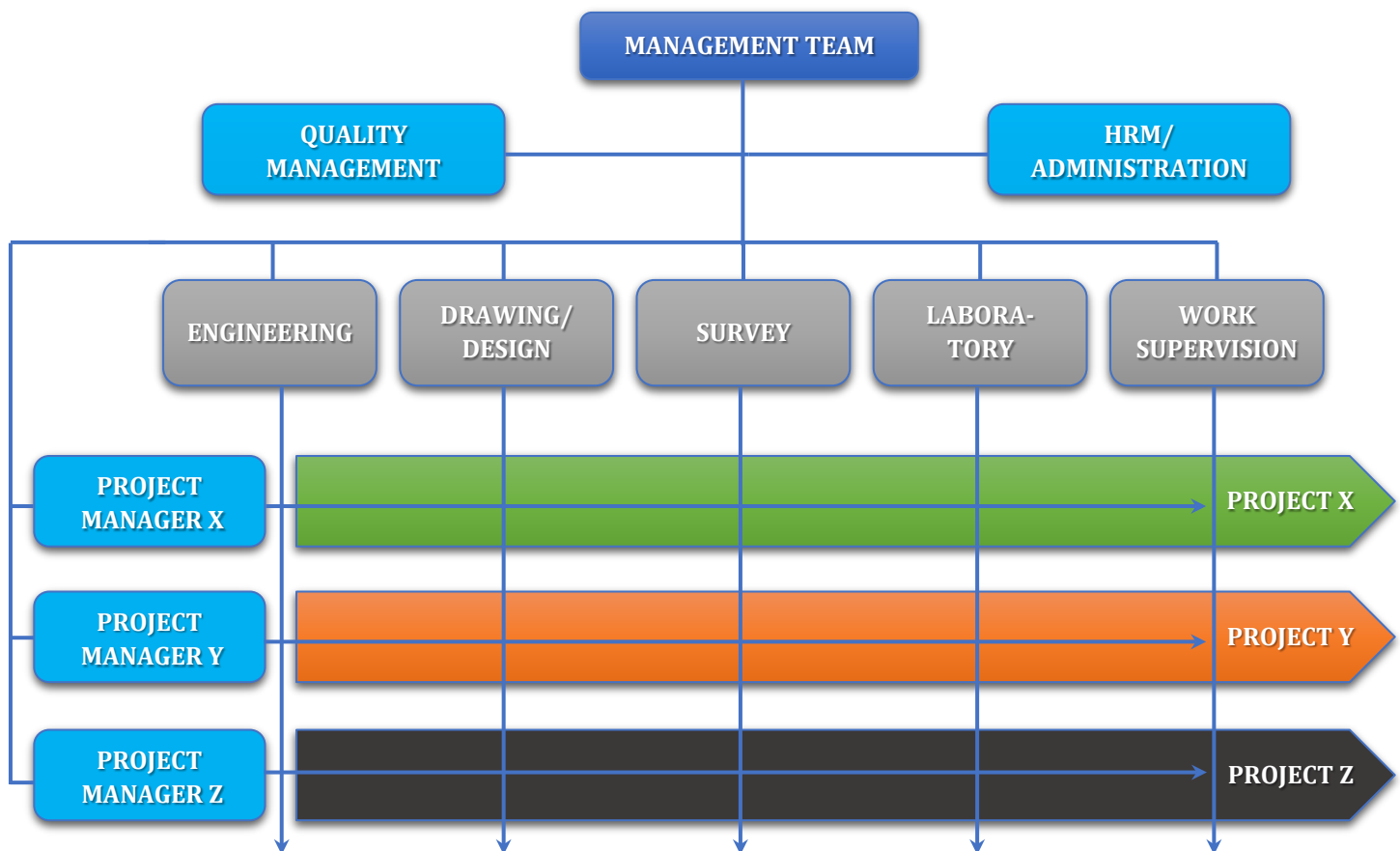
SUNECON - SURINAME ENGINEERING CONSULTANTS

VAN ROOSMALENSTRAAT 30 - POSTBUS: 770 - PARAMARIBO - SURINAME - T: (+597) 472275/477805 - F: (+597) 474408 - EMAIL: SUNECON@SR.NET

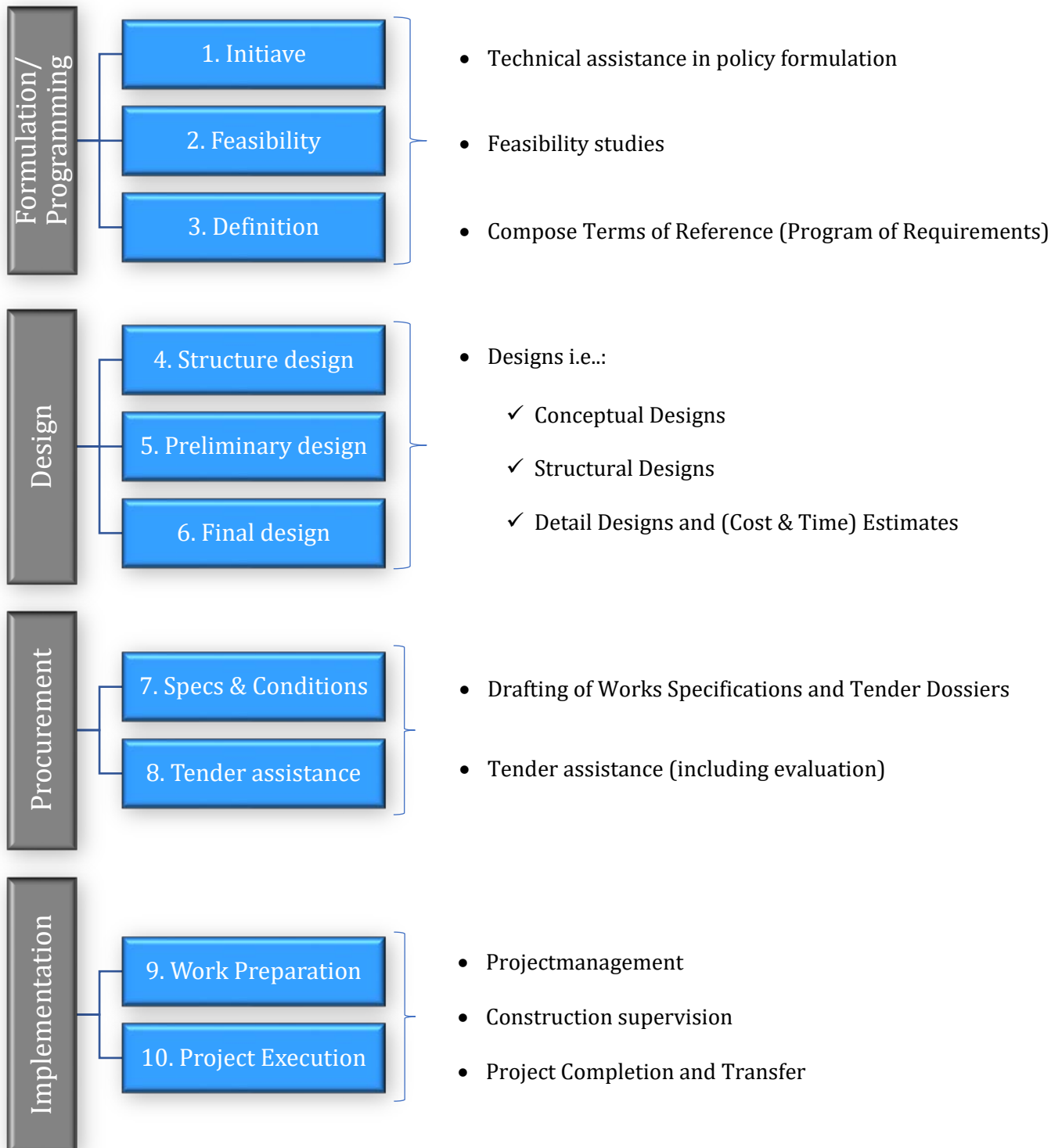
## ORGANIZATION

Drawing from our different departments, we compile a project team for every project, specific to the needs of the Client. Quick view personnel status:

- Partners : 4 (all MSc. Civil Engineers)
- Engineers total : 16 (6 MSc. / 9 BSc. / 1 B.Tech)
- Detail design draughtsmen : 4 (vocational)
- Field supervisors : 13 (2 B.Tech / 11 vocational)
- Surveyors : 8 (5 vocational, 3 assistants)
- Soils & asphalt laboratory : 5 (vocational)
- HRM / administrative : 6 (1 MSc. / 5 vocational)



## OUR SERVICES



## DISCIPLINES



- Public Road and Haul Road Construction
- Traffic and Road Safety Engineering
- Road Management
- Sea Dikes and River Banks Protection
- Quays, Piers & Mooring Facilities. Ports & Harbours
- Bridge Construction
- Residential and Commercial Buildings. Structures & Foundations
- Sport Facilities & Accomodations
- Water Management (Irrigation & Drainage) & Pumping Stations
- Sewerage
- Urban & Site Planning
- Residential and Commercial Land Development
- Infrastructure Planning
- Project Management



## CLIENTS

Public Sector

Private Sector  
(Industry, Contractors,  
Project Developers)

Utility  
Companies

International  
Financing  
Institutions



SUNECON - SURINAME ENGINEERING CONSULTANTS

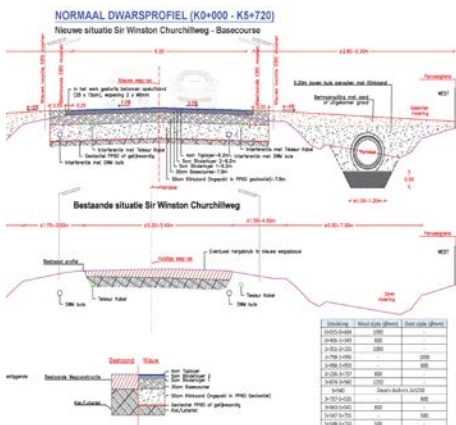
VAN ROOSMALENSTRAAT 30 - POSTBUS: 770 - PARAMARIBO - SURINAME - T: (+597) 472275/477805 - F: (+597) 474408 - EMAIL: SUNECON@SR.NET

## PROJECT REFERENCES

### Public and Haul Road Design & Construction Management

Geometrical, geotechnical, structural and drainage design, soil and material testing, survey services, procurement assistance, construction supervision and project management. Public roads & highways, and mining haul roads.

- DALIAN III, DALIAN IV, DALIAN 70KM
- National Infrastructure Projects NIP
- National Pavement Projects LB-1
- Henry Fernandes – Monkshoop, Monkshoop – Boskamp
- Nassau Haul Road

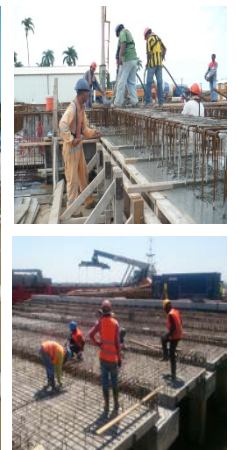
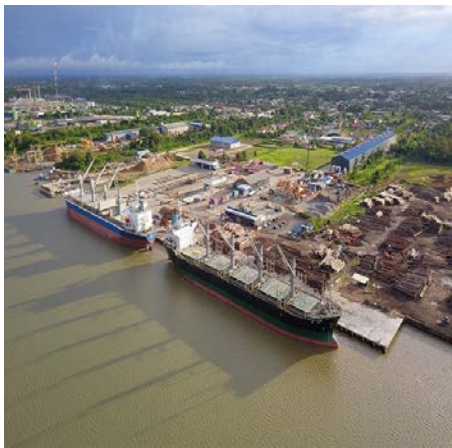
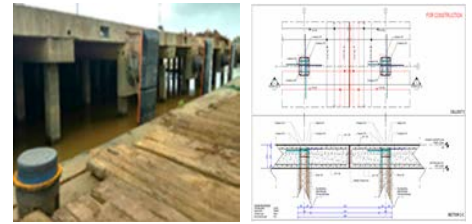


## PROJECT REFERENCES

### Ports, Harbours, Quays

Foundations and structural design, construction management, survey services.

- Kuldipsingh Port Facilities: Quay Expansion
- Harbour Nickerie



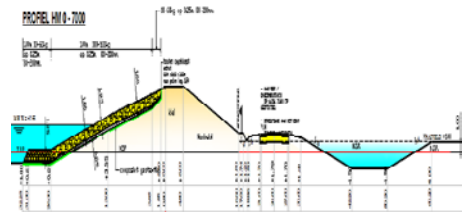
SUNECON - SURINAME ENGINEERING CONSULTANTS

VAN ROOSMALENSTRAAT 30 - POSTBUS: 770 - PARAMARIBO - SURINAME - T: (+597) 472275/477805 - F: (+597) 474408 - EMAIL: SUNECON@SR.NET

\_\_\_\_\_



- 
- An aerial photograph showing a dam and lock system on a river. The river flows from the top left towards the bottom center. A large area of land to the right of the river is flooded, with a muddy brown color. The dam structure is visible in the center, with a lock system below it. The surrounding landscape includes green trees and some buildings.

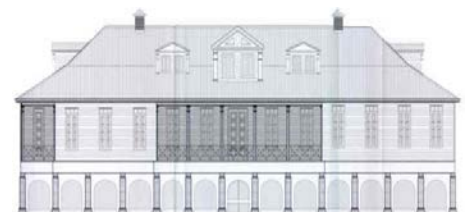
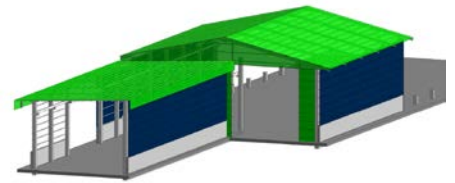


VAN ROOSMALENSTRAAT 30 - POSTBUS: 770 - PARAMARIBO - SURINAME - T: (+597) 472275/477805 - F: (+597) 474408 - EMAIL: SUNECON@SR.NET

## PROJECT REFERENCES

### Commercial & public buildings, sport facilities

- Ministry of Foreign Affairs
- District Court
- ADEKUS University Campus
- STICRIS Women Shelter
- Kuldipsingh KPF Warehouse
- Anthony Nesty Sports Hall
- Ismay van Wilgen Sports Hall



SUNECON - SURINAME ENGINEERING CONSULTANTS

VAN ROOSMALENSTRAAT 30 - POSTBUS: 770 - PARAMARIBO - SURINAME - T: (+597) 472275 / 477805 - F: (+597) 474408 - EMAIL: SUNECON@SR.NET



**Always going the Extra  
Mile for our Clients ...**



## CONTACT US



Van Roosmalenstraat #30  
Paramaribo - Suriname



(597) 472275  
(597) 477805  
(597) 474408



[sunecon@sr.net](mailto:sunecon@sr.net)



[www.sunecon.net](http://www.sunecon.net)



SUNECON - SURINAME ENGINEERING CONSULTANTS

VAN ROOSMALENSTRAAT 30 - POSTBUS: 770 - PARAMARIBO - SURINAME - T: (+597) 472275/477805 - F: (+597) 474408 - EMAIL: [SUNECON@SR.NET](mailto:SUNECON@SR.NET)